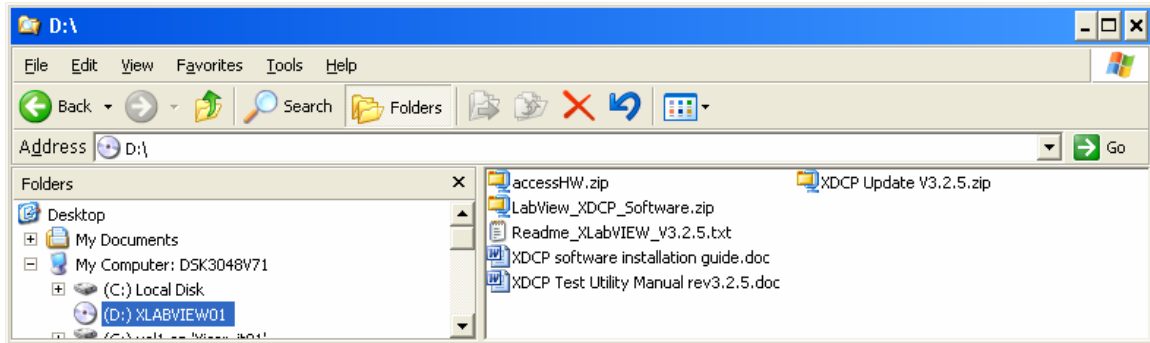
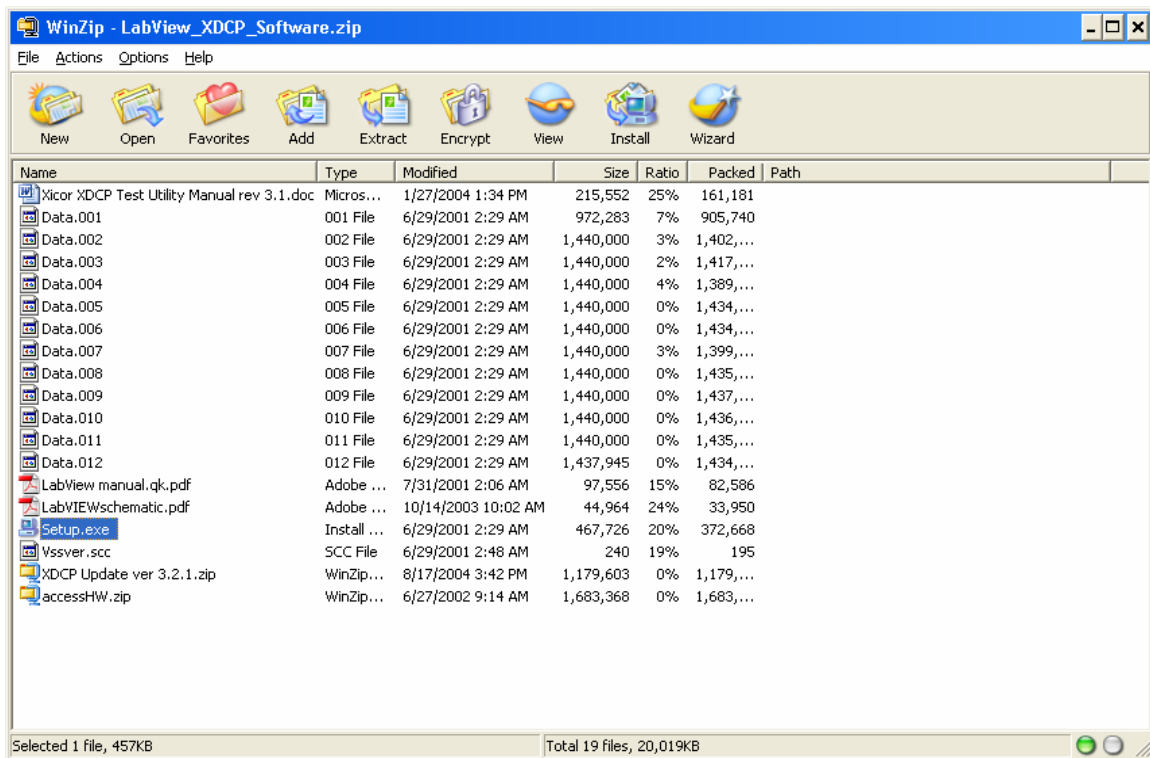


XDCP Software Installation Guide

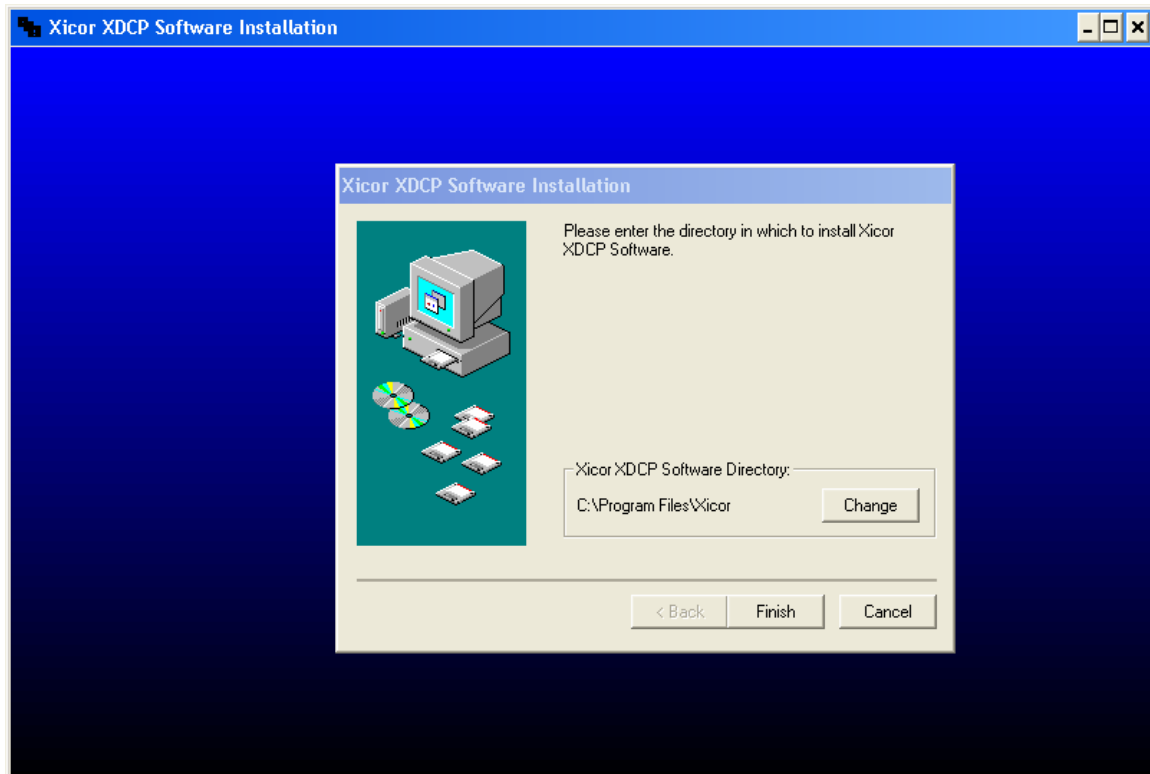
1. Insert CD-ROM with Intersil XDCP LabVIEW™ Software into CD-ROM drive. Explore the CD-ROM drive using Windows Explorer. Note there is no automatic start up.



2. Use WinZip Utility or just double click on LabView_XDCP_Software.zip to explore this zip file. Run Setup.exe to start installation.



Installer will prompt to install XDCP Software to C:\Program Files\Xicor directory.



Push “Finish” button to start installation.

3. When installation is done, you will receive message that installation complete successfully and LabVIEW Run-Time Engine 6.0 Setup window will appear.



Click “Next” button to run Installation Wizard.

Wizard will prompt to install LabVIEW Run-Time Engine 6.0 to C:\Program Files\National Instruments directory. Push “Next” button to continue.

After the LabVIEW Run-Time Engine will be installed successfully the following window will appear.

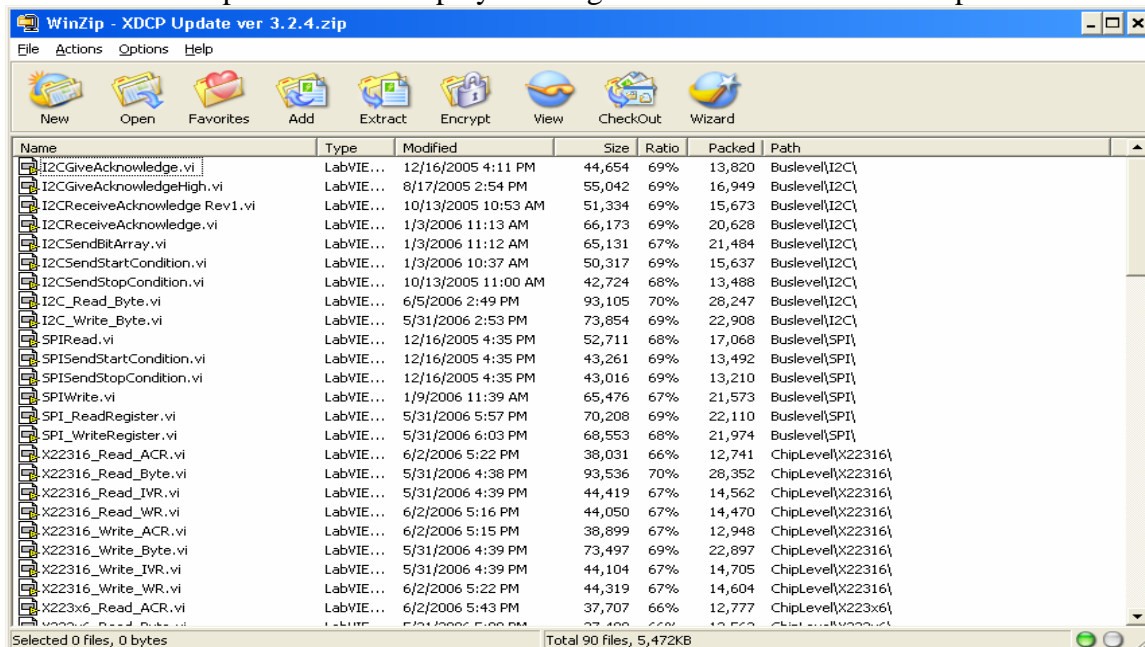


Click “Finish” button to complete installation.

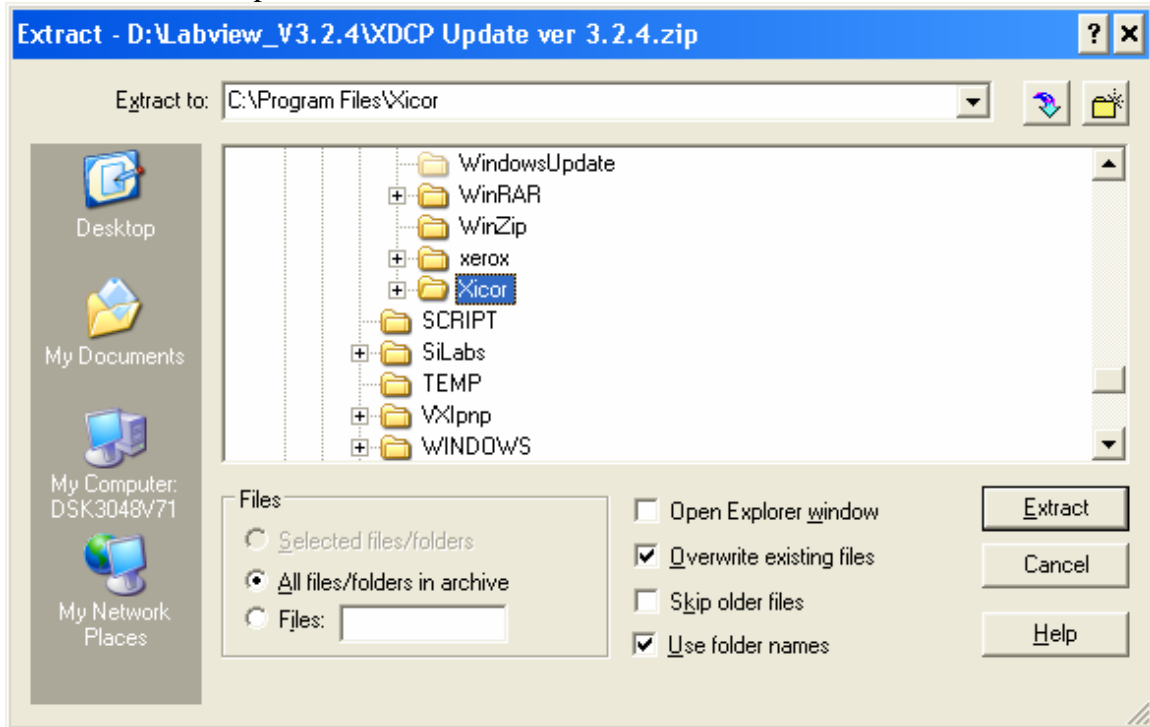
4. Install the LabView_V3.2.5 update.

Follow Readme_XicorLabView_V3.2.5.txt instruction:

Extract XDCP Update ver3.2.5.zip by clicking Extract button from WinZip menu bar.



Choose Extract to C:\Program Files\Xicor directory. Check Overwrite existing files and Use folder names option, and click Extract button.



Installation is complete.